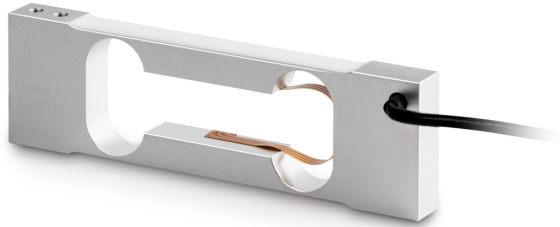


# KERN CP 3000-0Y4

# KERN

Single-point load cell made of anodised aluminium



## Construction

Design	Singlepoint load cell
Dimension (W×D×H)	110×33×10 mm
Dimensions weighing platform (W×D×H)	120×120×0 mm
Material	aluminium
Cable length	0,45 m
Mounting - force application	2 × threaded hole M3
Mounting - force dissipation	2 × threaded hole M3

## Functions

IP protection - complete device	IP65
---------------------------------	------

## Environmental conditions

Use temperature [Min]	-10 °C
Use temperature [Max]	40 °C
Ambient temperature [Min]	-20 °C
Ambient temperature [Max]	50 °C
Storage temperature [Min]	-30 °C
Storage temperature [Max]	60 °C

## Packing & Shipping

Readability force [d] (N)	1 d
Dimensions packaging (W×D×H)	120×50×35 mm
Net weight	0,071 kg
Shipping method	Parcel service
Net weight approx.	0,10 kg
Gross weight approx.	0,10 kg
Shipping weight	0,1 kg

## Services (optional)

Article number for DAkkS calibration (compressive force)	963-261V
----------------------------------------------------------	----------

## Pictograms

### STANDARD



### OPTION



## Category

Brand	Sauter
Product category	Measuring cell
Product group	Load cell
Product family	CP Y4

## Measuring System

Weighing capacity [Max]	3 kg
Load cell connection	4-wire
Load cell OIML class	C3
Load cell - Resolution (verifiable)	3000 e
Load cell - characteristic value - nominal	0,9 mV/V
Load cell - characteristic value - variance	0,1 mV/V
Load cell - Combined error	0,017%
Load cell - Dead load [Min] (%)	0%
Measuring applications	mass
Load cell - Input resistance - nominal	405 Ω
Load cell - Output resistance - nominal	350 Ω
Load cell - Isolation resistance - [Min]	5000 MΩ
Load cell - Recommended excitation voltage [Min]	9 V
Load cell - Recommended excitation voltage [Max]	12 V
Load cell - Input resistance - variance	6 Ω
Load cell - Output resistance - variance	3 Ω
Directions of force	compression

## Approval

CE mark	✓
---------	---